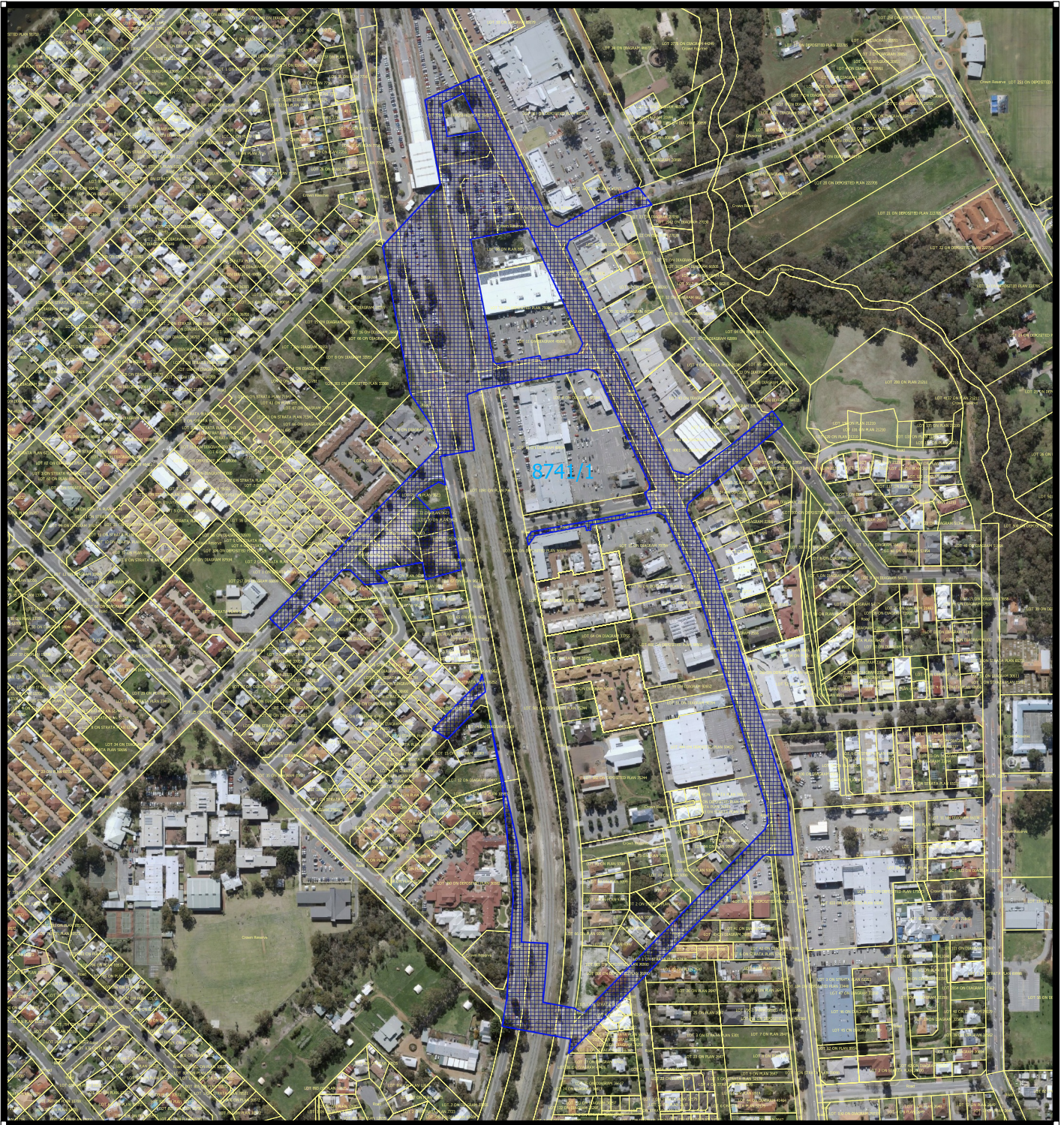
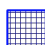



# CPS 8741/1 - Map



## Legend

-  CPS areas applied to clear
-  Local Government Authorities
-  Cadastre - LGATE 218

0 100 200 300 400 m



MGA 94  
Geocentric Datum of Australia 1994



Officer delegated under section 20 of the  
Environmental Protection Act 1986



GOVERNMENT OF  
WESTERN AUSTRALIA